



SPEKTRA DECOR TOPAZ

SPEKTRA DECOR TOPAZ is a water-based decorative coating used to decorate and protect interior wall surfaces. The coating is distinguished by metal reflective effects which attract the attention of even the most inattentive of visitors, and oblige them to observe the playful game of light which, depending on the angle of incidence, reflects from the metal particles in different ways.

The coating is used to create a mixture of antique art and modern design, and is thus suitable for a wide range of applications in our living environment. Using this products can give rooms an added value. The coating is suitable both for small as well as for large wall surfaces where other decorative techniques are difficult to use. The coating is resistant to cleaning with water, and its high level of vapour permeability enables the application to practically all construction surfaces.

SPEKTRA DECOR TOPAZ packaging:

1 L / 2 L – two basic shaded + 28 shades according to the HGMIX system

Consumption:

1 L covers 6 – 8 m² of surface in one coat.



To apply the coating – use a 3 x 12 cm natural-bristle brush



To smoothen the coating – use a 1,5 x 10 cm natural-bristle brush

Decorative technique system

1. Old and new surfaces must be cleaned of dust, poorly bonded particles or old paint with poor adhesion, all the way to the healthy solid substrate. Check the moisture in the substrate, which must not exceed 3 %, and then impregnate with **SPEKTRA Impregnation Acryl Special** or **SPEKTRA Impregnation Acryl** (thinned with water in a 1 : 3 ratio).
2. Smoothen the impregnated surface with **SPEKTRA Level Rough**, **SPEKTRA Level Medium** or **SPEKTRA Level Fine**.
3. Once the surface is smoothened, sanded and cleaned of dust, apply **SPEKTRA Decor Grund** primer to achieve a uniform white surface.
4. **SPEKTRA DECOR TOPAZ** is to be thinned with water, up to a maximum of 10 % for light surfaces, and up to a maximum of 5 % for dark surfaces. The coating is to be applied with a wide brush in a crossing technique or a uniform application in all directions. One the coating starts to dry, "smoothen" it with a wide brush in a crossing technique.

On larger surfaces, it is recommended that the application and smoothening phases be done by two painters to ensure a uniform coat on the entire surface. One coat is required for light shades, whereas for dark shades we recommend two coats in order to achieve a better result. The drying time between each application should be at least 4 hours.



DECOR TOPAZ



Helios TBLUS d.o.o.
Količevo 65
1230 Domžale, Slovenija
T +386 1 722 40 00
E deco.coatings@helios.si
www.helios-deco.com
Member of KANSAI HELIOS.

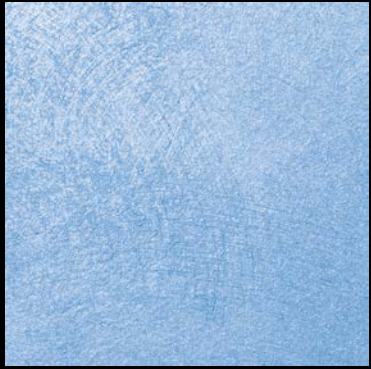
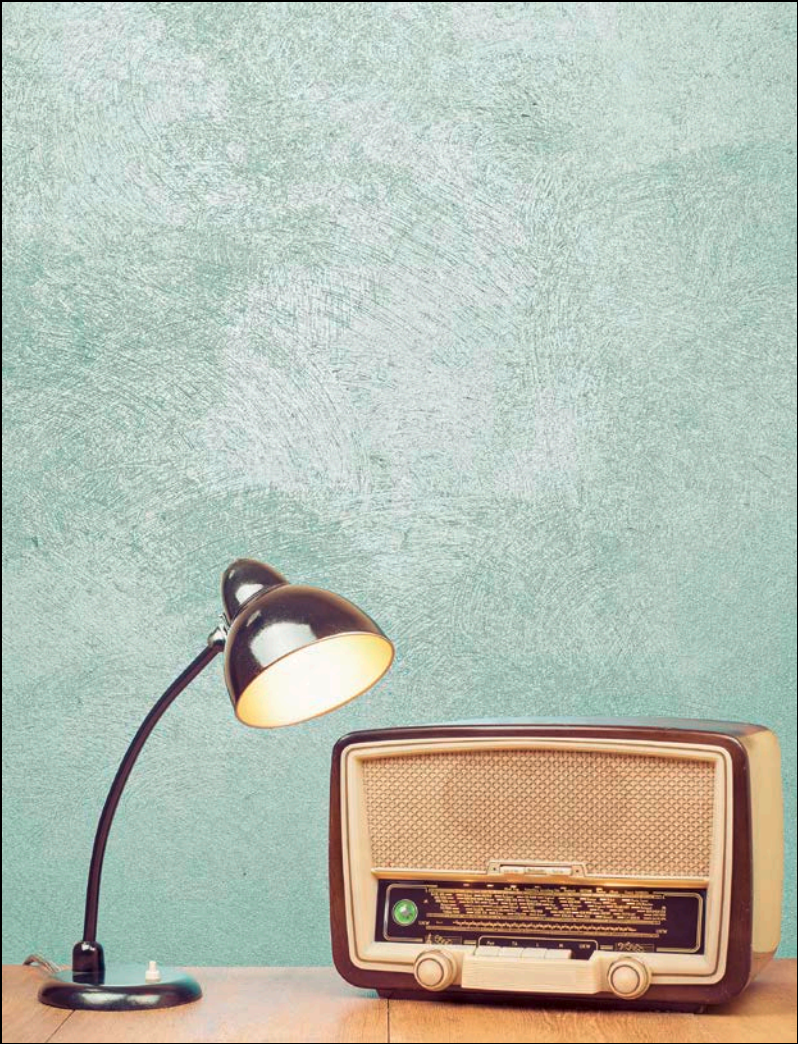


397962 – EN / 2023

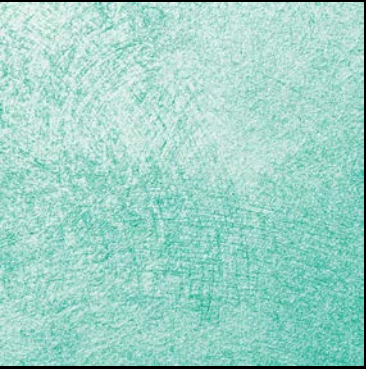
SPEKTRA DECOR TOPAZ



Warning!
Colour shades in the leaflet
can differ from the actual
colour shade of the coating
as a result of different
substrates, application and
the different colour chart
used in print.



DT 004 S



DT 009 S



DT 014 S



DT 018 G



DT 023 G



DT 028 G



DT 003 S



DT 008 S



DT 013 S



DT 017 G



DT 022 G



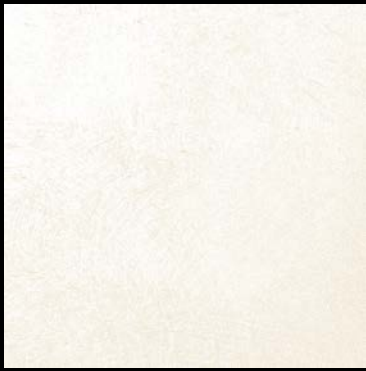
DT 027 G



DT 002 S



DT 007 S



DT 012 S



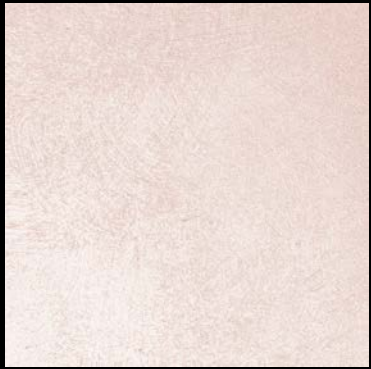
DT 016 G



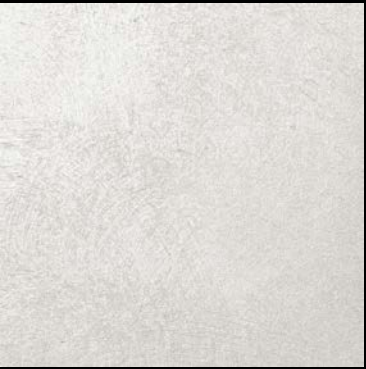
DT 021 G



DT 026 G



DT 001 S



DT 006 S



DT 011 S



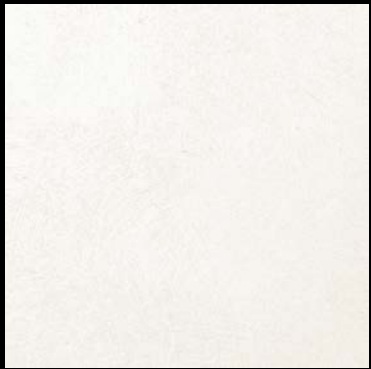
DT 015 G



DT 020 G



DT 025 G



DT SILVER



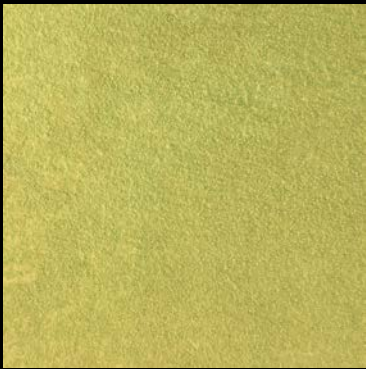
DT 005 S



DT 010 S



DT GOLD



DT 019 G



DT 024 G