



**HELIOS**

**SPEKTRA®**

Decorative  
techniques

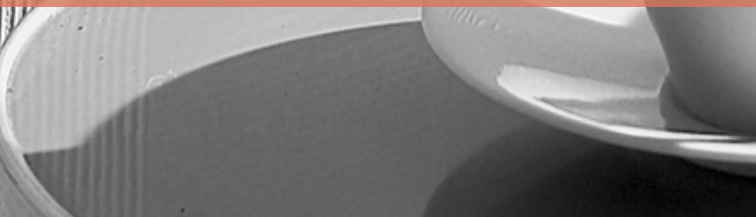


# HELIOS – YOUR WORLD, OUR PAINTS



Colour plays an important role in our life. With colour design, moods and atmospheres can be created, which can influence the well-being. At the same time colours and paints fulfill also technical features. At HELIOS we strive for continuous developments following the world's newest trends in architectural coatings. In the process of constant formulation upgrades of our high-quality coatings, we are particularly focused on accelerating the elimination of environmentally harmful substances, and the introduction of new ones that will be nature- and human-friendly. By doing so, we also develop brand new products which consistently respect the most strict ecological standards and recommendations.

HELIOS is one of the most successful brands in the field of architectural coatings and has throughout the years developed to be a full-range partner to paint and decorate every surface – wall, facade, concrete, metal, plastic, wood and parquet. The brand offers specific products for end customers, but also for professional users. The four subbrands (SPEKTRA, BORI, TESSAROL and IDEAL) fill the needs of consumers inside and outside their homes.



# Decorative techniques

using SPEKTRA Domflok varnishes



**SPEKTRA Domflok Pearl, SPEKTRA Domflok Matt, SPEKTRA Domflok Semi-matt and SPEKTRA Domflok Gloss** are decorative coatings which allow you to apply various decorative techniques that are used to decorate and protect interior wall surfaces in business premises, hallways, anterooms, living rooms and all other spaces where you want to have patterns on the walls. **SPEKTRA Domflok Pearl**, as the name suggests, is a varnish with a pearl effect, while **SPEKTRA Domflok Gloss, SPEKTRA Domflok Matt and SPEKTRA Domflok Semi-matt** are colourless coatings that may be tinted as required.

## Preparation of the substrate for decorative techniques:

### Step 1:

1 × **SPEKTRA Impregnation Acryl Special** or **SPEKTRA Impregnation Acryl**



### Step 2:

2–3 × surface smoothing



### Step 3:

2–3 × application of paint in the colour shade of your choosing (**SPEKTRA Latex Matt**)





# BUFFING PAD



# BUFFING PAD

## using the SPEKTRA Domflok Pearl

### Step 1:

Application of the **SPEKTRA Domflok Pearl**.



Apply an even layer of the varnish onto a prepared surface using a brush or roller. The user applying the varnish to the surface should be followed by the user creating the pattern. The distance between them should not exceed one meter.

### Step 2:

Creating a pattern with the decorative finishing trowel.



**Warning:** Always moisten the pad before use and drain well, to soften the cloth.

Start creating the pattern in the corner by firmly pressing the tool onto freshly applied **SPEKTRA Domflok Pearl**. First, conceal the brush strokes by applying a strong pressure, then treat the same surface twice by applying a soft pressure, to achieve the desired pattern. Complete the pattern:

1× strong pressure, 2× soft pressure, on the surface of one square meter. Each time before applying pressure to the surface, the pad must be turned right or left by 15 to 45 degrees in order to achieve the most irregular pattern possible. In the corners, the pattern must be created with a crumpled cloth.

Tools should be cleaned with water immediately after use.



SILK



# SILK

## using the SPEKTRA Domflok Pearl



### Step 1:

Application of **SPEKTRA Domflok Pearl** with a brush.



Using a wide and thin brush, apply an even layer of **SPEKTRA Domflok Pearl** varnish onto a prepared surface.

### On large surfaces:

#### Step 1:

Application of **SPEKTRA Domflok Pearl** with a roller.



Apply an even layer of **SPEKTRA Domflok Pearl** varnish onto a prepared surface with a roller.

#### Step 2:

Creating a pattern with a brush.

Then, the pattern is created on the fresh coat with the second user using a brush.



Tools should be cleaned with water immediately after use.





JEANS





# JEANS

## using the SPEKTRA Domflok Gloss



By using the **JEANS** decorative technique, we obtain the effect of refracting light and a playful appearance of the surface. The surface has a satin gloss which changes depending on the angle at which light hits it. The surface protected by **SPEKTRA Domflok Gloss** is highly washable.

At least two or more persons must be present when using the **JEANS** decorative technique - depending on the size of the surface.



### Step 1:

Application of **SPEKTRA Domflok Gloss** with a small roller.

Using a roller, cover the surface in an even layer of **SPEKTRA Domflok Gloss**, to which 20 % **SPEKTRA Latex Matt** shade has been added. The user applying the varnish to the surface should be followed by the user creating the pattern. The distance between them should not exceed half a meter. After the first square meter is completed, the surface must be checked to establish whether the pattern is even.

### Step 2:

Creating a pattern with the decorative tools.

Using a rubber “comb”, start creating the pattern in the corner on the freshly applied **SPEKTRA Domflok Gloss**. The pattern is made by tracing the tool in different directions, to obtain the most dynamic structure possible. Be careful during application so as not to damage the already finished pattern with new strokes. Therefore, avoid using the **JEANS** technique on large surfaces that might be too challenging.

Tools should be cleaned with water immediately after use.

SPONGE





## using the **SPEKTRA Domflok Gloss** or **SPEKTRA Domflok Pearl**



The **SPEKTRA** decorative technique with a **SPONGE** is ideal for light and large surfaces, as its subtle and elegant appearance renders it inconspicuous, and all its beauty is revealed when light plays on the surface.

It can be combined in all shades according to the **HGMIX INTERIOR COLOUR COLLECTION**, **HGMIX EXTERIOR COLOUR COLLECTION**, **HARMONIA** and **MONICOLOR 720** colour cards.



### **Step 1:**

Preparation for decorative technique application

**SPEKTRA Domflok Gloss** can be tinted with 10 % **SPEKTRA Latex Matt** and thinned at 25 % with water. When tinting, take care not to thin the paint excessively to prevent dripping when sponge is pressed against the wall.

### **Step 2:**

Creating a pattern with a natural sea sponge

To apply a pattern with a sponge, you will need a tray for dipping the decorative sponge. It is important to wash the sponge in water before use and wring it out firmly, so that it is moist and soft.

Start applying the pattern at an angle by pressing the sponge repeatedly and evenly, rotating the sponge by a quarter to the left or right with each press to achieve a finish without any visible sponge outlines or visible traces of application.

Tools should be cleaned with water immediately after use.

DENIM





# DENIM

## using the SPEKTRA Domflok Gloss

At least two or more persons must be present when using the **DENIM** decorative technique – depending on the size of the surface.



### Step 1:

Application of **SPEKTRA Domflok Gloss** with a roller.

Using a roller, cover the surface in an evenly thick layer with **SPEKTRA Domflok Gloss**, to which 20 % **SPEKTRA Latex Matt** shade has been added. The user applying the varnish to the surface should be followed by the user creating the pattern. The distance between them should not exceed one meter. After the first two running meters are completed, the surface must be checked to establish whether the pattern is even.

### Step 2:

Creating a pattern with the decorative finishing trowel.

Start creating the pattern in the corner with medium-strong vertical strokes with a finishing trowel on the freshly applied **SPEKTRA Domflok Gloss**. Vertical strokes downwards create a fabric pattern. Stop at least half a meter above the floor, and then apply in an upward direction to create a nice blend and beautiful pattern across the entire surface.

Tools should be cleaned with water immediately after use.



STONE



# STONE

## using the **SPEKTRA Domflok Pearl**



The **SPEKTRA STONE** decorative technique can be a very glamorous or subtle technique, offering a very functional surface. The appearance obtained with this technique creates a world of undefined lines, which can be found in nature's layers of soil and rock. The **STONE** pattern can always be found in rocks, soil and when light refracts.

It can be combined in all shades according to the **HGMIX INTERIOR COLOUR COLLECTION**, **HGMIX EXTERIOR COLOUR COLLECTION**, **HARMONIA** and **MONICOLOR 720** colour cards.



### **Step 1:**

Preparation of the surface.

After preparing the substrate, take a light protective film required to create the decorative pattern, and hang it onto the ceiling or the upper edge of the surface. The pieces of film should be 0.5 m higher than the edge of the ceiling. Spread the foil and use adhesive tape to attach it to the upper part of the surface, while attaching the other end to the "ceiling" only enough to leave a space between it and the wall, to enable the application of material with a roller.



### **Step 2:**

Creating the **STONE** decorative pattern.

Start applying **SPEKTRA Domflok Pearl** when the surface is prepared and equipped with the foil. Apply the varnish with a big roller using the classical painting technique. After the application of the varnish in the width of one piece of film, lower the foil so that it sticks onto the fresh varnish. Using a soft wide "brush", press the foil onto the surface and proceed with your work.

After the process is completed, remove the films and wait for the surface to dry. Each surface is unique and cannot be painted in the same way as the others.

Tools should be cleaned with water immediately after use.

# DECOR RUST & COPPER





# Decorative techniques using SPEKTRA DECOR RUST and SPEKTRA DECOR COPPER

**SPEKTRA DECOR RUST** is a decorative coating that creates the unique appearance of rusty iron. It is a high-quality wall coating that contains special additives, which create the rusty effect. It is suitable for building new and renovating old wall surfaces.

**SPEKTRA DECOR COPPER** is a decorative coating, intended for the decoration and protection of interior surfaces. It is suitable for building new and renovating old wall surfaces. It boasts a copper patina effect and is suitable for a variety of rooms in a home. The two coatings can also be combined, which creates a distinctive decorative effect.

## Application of decorative technique:

### Step 1:

1 × **SPEKTRA Impregnation Acryl Special** or **SPEKTRA Impregnation Acryl**



### Step 2:

smoothing of the surface with  
2 × **SPEKTRA Level Fine** with  
intermediate and final sanding



### Step 3:

2 × application of **SPEKTRA Decor Grund**



### Step 4:

2 × application of **SPEKTRA DECOR COPPER / RUST**



### Step 5:

**SPEKTRA DECOR ACTIVATOR**  
(application to  
wet coat)



### Step 6:

**TESSAROL ACRYLIC VARNISH**  
2 × application;  
to stop oxidation



### Warning:

Because the consistency of **SPEKTRA DECOR ACTIVATOR** is very similar to water, make sure that during application, the material does not flow over the surface on which you do not want the desired effect. The intensity or scope of oxidised surface depends on the look you aim to achieve. A better effect, which is closer to the natural appearance of rust or oxidised copper will be achieved by using the activator sparingly. Tools should be cleaned with water immediately after use.

# RUST

## SPEKTRA DECOR RUST

For all decorative techniques, the final appearance of the surface mostly depends on the applicator and this technique is no exception. **SPEKTRA DECOR RUST** is applied with a brush and spatula.

After mixing, **SPEKTRA DECOR RUST** is applied with a brush to the surface in all directions with uneven strokes. Use a spatula to achieve an even better effect when painting. After 3–4 hours, when the coating has dried, spray **SPEKTRA DECOR ACTIVATOR**. To achieve a better and more natural rust effect, avoid overusing the activator. If, after a few hours of oxidation, the desired intense appearance is still not achieved, repeat the application of **SPEKTRA DECOR ACTIVATOR**.



# COPPER

## SPEKTRA DECOR COPPER

The coating is suitable for large and small interior wall surfaces. The final appearance depends on the inspiration of the applicator and the amount of **SPEKTRA DECOR ACTIVATOR** sprayed.

Before applying **SPEKTRA DECOR COPPER**, mix the coating well and apply with the selected applicator (brush or spatula) in uneven strokes in all directions. When the coating is dried, spray **SPEKTRA DECOR ACTIVATOR** to achieve the desired intensity of a copper patina appearance; be careful to ensure that the oxidation process does not immediately stop due to the humidity in the room. The intensity or extent of the oxidized surface depends on the desired appearance. To achieve a better and more natural effect, avoid overusing the activator.



# DECOR QUARZ & TOPAZ





## Decorative techniques using SPEKTRA Decor Quarz and SPEKTRA Decor Topaz

**SPEKTRA Decor Quarz** is a rough, siloxane-based paint used for the decoration and protection of interior and exterior wall surfaces. It is distinguished by high vapour permeability, water-repellency and resistance to atmospheric influence.

The final decorative effect when using the **SPEKTRA Decor Quarz** is a rough velvety blend on the surface.

**SPEKTRA Decor Topaz** is a water-based decorative coating, intended for the decoration and protection of interior wall surfaces. The coating is resistant to cleaning with water, and its vapor permeability enables application onto practically all construction surfaces.

**SPEKTRA Decor Topaz** boasts a metallic reflective effect that creates a mix of antique art and modern design in the room, and can thus be used in a wide range of living spaces.

### Preparation of the substrate for decorative techniques:

#### Step 1:

1 × **SPEKTRA Impregnation Acryl Special**  
or **SPEKTRA Impregnation Acryl**



#### Step 2:

2–3 × surface smoothening



#### Or, on exterior surfaces:

1 × preparation of the surface



#### Step 3:

2–3 × application of paint  
in the white colour shade  
**SPEKTRA Decor Grund**



DECOR QUARZ



# QUARZ

## Decorative techniques using SPEKTRA Decor Quarz



As for all other decorative techniques, the final appearance of the surface mostly depends on the inspiration of the user. The **SPEKTRA Decor Quarz** is applied with a brush.

**SPEKTRA Decor Quarz** is applied onto the surface with a wide brush, and spread with cross-crass technique in all directions so as to obtain an even blend of rough and smooth surfaces.



DECOR TOPAZ





# TOPAZ

## Decorative techniques using SPEKTRA Decor Topaz



The coating is suitable both for small and large wall surfaces where other decorative techniques are difficult to use. As for all other decorative techniques, the final appearance of the surface mostly depends on the inspiration of the user.

**SPEKTRA Decor Topaz** is applied with a brush.

### **SPEKTRA Decor Topaz**

is applied onto the surface with a wide brush, and spread with cross-cross technique in all directions so as to obtain an even blend of rough and smooth surfaces with metal reflection.



# Decorative techniques

## Colour card Decor Quarz



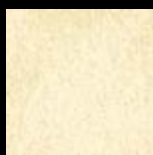
DQ 100



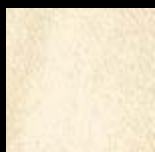
DQ 110



DQ 120



DQ 130



DQ 140



DQ 101



DQ 111



DQ 121



DQ 131



DQ 141



DQ 102



DQ 112



DQ 122



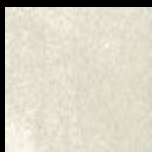
DQ 132



DQ 142



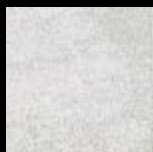
DQ 150



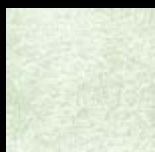
DQ 160



DQ 170



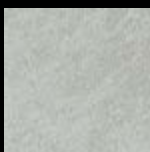
DQ 180



DQ 190



DQ 151



DQ 161



DQ 171



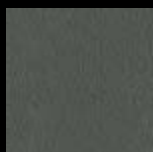
DQ 181



DQ 191



DQ 152



DQ 162



DQ 172



DQ 182

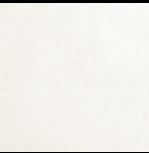


DQ 192

# Decorative techniques

## Colour card Decor Topaz Silver and Gold

The presentation of shades is for information purposes only.  
There might be deviations of colour shades compared to the presentation, which are not subject to claims.



DT SILVER



DT 001 S



DT 002 S



DT 003 S



DT 004 S



DT 005 S



DT 006 S



DT 007 S



DT 008 S



DT 009 S



DT 010 S



DT 011 S



DT 012 S



DT 013 S



DT 014 S



DT GOLD



DT 015 G



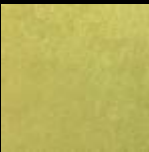
DT 016 G



DT 017 G



DT 018 G



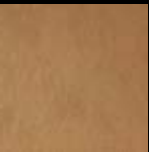
DT 019 G



DT 020 G



DT 021 G



DT 022 G



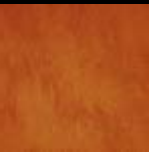
DT 023 G



DT 024 G



DT 025 G



DT 026 G



DT 027 G



DT 028 G



**Helios TBLUS d.o.o.**

Količevo 65, 1230 Domžale, Slovenia

T +386 1 722 40 00

E [deco.coatings@helios.si](mailto:deco.coatings@helios.si)

[www.helios-deco.com](http://www.helios-deco.com)

Member of  **KANSAI  
HELIOS**

Part of  **KANSAI  
PAINT**